

FFS-S FIRE-FIGHTING UNIT KIT

SUBMERSED PERFORMANCE TABLES (SF6 - WINNER 4N15)

Model 400V Three phase	P ₂		Q=Flow rate							
	[HP]	[kW]	l/min m ³ /h	200	250	300	400	500	550	
				12	15	18	24	30	33	
				H=Head [m]						
SF6 S25-3	4	3		40,0	38,0	35,5		29,5	21,5	16,5
SF6 S25-4	5,5	4		53,0	50,5	47,5		39,5	29,0	22,0
SF6 S25-6	7,5	5,5		80,0	76,0	71,0		59,0	43,0	33,0

Model 400V Three phase	P ₂		Q=Flow rate							
	[HP]	[kW]	l/min m ³ /h	300	400	500	550	600	700	750
				18	24	30	33	36	42	45
				H=Head [m]						
SF6 S32-2	4	3		28,5	26,5	23,5	22,0	19,7	14,6	11,4
SF6 S32-3	5,5	4		43,0	40,0	35,5	32,5	29,5	22,0	17,1
SF6 S32-4	7,5	5,5		57,0	53,0	47,0	43,5	39,5	29,0	23,0
SF6 S32-5	10	7,5		71,5	66,5	59,0	54,5	49,5	36,5	28,5
SF6 S32-6	12,5	9,2		86,0	80,0	71,0	65,5	59,0	44,0	34,0

Model 400V Three phase	P ₂		Q=Flow rate									
	[HP]	[kW]	l/min m ³ /h	400	500	600	700	750	800	900	1000	
				24	30	36	42	45	48	54	60	
				H=Head [m]								
SF6 S42-2	5,5	4		22,5	21,0	19,2	17,1	16,0	14,5	11,4	8,0	
SF6 S42-3	7,5	5,5		33,5	31,5	29,0	25,5	24,0	22,0	17,2	12,0	
SF6 S42-4	10	7,5		45,0	42,0	38,5	34,0	31,5	29,0	23,0	16,0	
SF6 S42-5	12,5	9,2		56,0	52,5	48,0	42,5	39,5	36,5	28,5	20,0	
SF6 S42-6	15	11		67,0	63,0	57,5	51,0	47,5	43,5	34,5	24,0	
SF6 S42-8	20	15		89,5	84,0	77,0	68,0	63,5	58,0	46,0	32,0	
SF6 S42-9	20	15		101,0	94,5	86,5	77,0	71,5	65,5	51,5	36,0	

Model 400V Three phase	P ₂		Q=Flow rate									
	[HP]	[kW]	l/min m ³ /h	100	130	160	200	240	280	320	350	
				6	8	10	12	14	17	19	21	
				H=Head [m]								
WINNER 4N15-13	4	3		64,0	60,0	56,0	49,0	43,0	35,0	27,0	21,0	
WINNER 4N15-17	5,5	4		83,0	78,0	73,0	64,0	56,0	46,0	36,0	27,0	
WINNER 4N15-24	7,5	5,5		118,0	110,0	103,0	91,0	78,0	65,0	50,0	38,0	

Model 400V Three phase	P ₂		Q=Flow rate					
	[HP]	[kW]	l/min m ³ /h	100	150	200	250	300
				6	9	12	15	18
				H=Head [m]				
SF6 R13-4	3	2,2		60,5	57,0	51,0	42,0	29,5
SF6 R13-5	4	3		75,5	71,5	64,0	52,5	37,0
SF6 R13-6	5,5	4		90,5	85,5	76,5	63,0	44,5
SF6 R13-7	7,5	5,5		106,0	100,0	89,5	73,5	52,0

IDROGO (JOCKEY) PERFORMANCE TABLE

Model	P ₂		Q=Flow rate					
	[HP]	[kW]	l/min m ³ /h	20	30	40	60	80
				1,2	1,8	2,4	3,6	4,8
				H=Head [m]				
IDROGO 40/08	0,8	0,6		43,3	40,2	36,3	26,1	13,4
IDROGO 40/10	1	0,75		54,1	50,2	45,4	32,6	16,8
IDROGO 40/12	1,2	0,9		64,9	60,2	54,5	39,2	20,2
IDROGO 40/15	1,5	1,1		75,7	70,3	63,6	45,7	23,5

WINNER 4N (JOCKEY) PERFORMANCE TABLE

Model	P ₂		Q=Flow rate									
	[HP]	[kW]	l/min m ³ /h	10	15	20	30	35	45	55	95	
				0,6	0,9	1,2	1,8	2,1	2,7	3,3	5,7	
				H=Head [m]								
WINNER 4N1- 18	0,7	0,55		95,0	89,0	80,0	54,0	38,0	-	-	-	
WINNER 4N1- 24	1	0,75		127,0	119,0	107,0	72,0	50,0	-	-	-	
WINNER 4N2- 20	1,5	1,1		-	131,0	127,0	113,0	103,0	75,0	38,0	-	
WINNER 4N4- 18	2	1,5		-	-	-	114,0	111,0	104,0	96,0	32,0	

FFS-S FIRE-FIGHTING UNIT KIT

SUBMERSED PERFORMANCE TABLES (BHE)

Model 400V Three phase	P ₂		Q=Flow rate							
	[HP]	[kW]	l/min m ³ /h	100	150	200	250	300	400	450
64 BHE 14-8	5,5	4		81,0	74,5	64,5	49,5	28,8	-	-
64 BHE 19-6	5,5	4		-	65,0	62,0	57,5	51,5	33,9	22,8
64 BHE 19-9	7,5	5,5		-	97,0	92,5	86,5	77,5	51,0	34,2

Model 400V Three phase	P ₂		Q=Flow rate								
	[HP]	[kW]	l/min m ³ /h	200	250	300	400	450	525	600	700
64 BHE 30-3	4	3		34,2	33,2	31,8	28,6	26,4	22,1	17,3	10,5
64 BHE 30-4	5,5	4		45,5	44,0	42,5	38,2	35,2	29,5	23,0	14,0
64 BHE 30-5	7,5	5,5		57,0	55,5	53,0	47,5	44,0	36,9	28,8	17,5
64 BHE 30-7	10	7,5		80,0	77,5	74,0	67,0	61,5	51,5	40,5	24,5

Model 400V Three phase	P ₂		Q=Flow rate								
	[HP]	[kW]	l/min m ³ /h	300	400	450	525	600	700	825	950
64 BHE 44-2	4	3		25,2	23,5	22,6	21,2	19,6	17,4	14,2	10,6
64 BHE 44-3	7,5	5,5		37,8	35,3	33,9	31,7	29,4	26,0	21,3	15,9
64 BHE 44-5	10	7,5		63,0	59,0	56,5	53,0	49,0	43,5	35,5	26,5
64 BHE 44-7	15	11		88,0	82,5	79,0	74,0	68,5	61,0	49,5	37,1

Model 400V Three phase	P ₂		Q=Flow rate									
	[HP]	[kW]	l/min m ³ /h	400	450	525	600	700	825	950	1050	1167
64 BHE 58-2	4	3		23,2	22,5	21,2	19,7	17,7	15,0	12,0	9,3	6,0
64 BHE 58-3	7	5,5		34,8	33,7	31,9	29,6	26,6	22,5	18,0	14,0	9,0
6 BHE 58-5	10	7,5		58,0	56,0	53,0	49,5	44,5	37,5	30,0	23,3	15,0
6 BHE 58-7	15	11		81,0	78,5	74,5	69,0	62,0	52,5	42,0	32,6	21,0

Model 400V Three phase	P ₂		Q=Flow rate							
	[HP]	[kW]	l/min m ³ /h	600	700	1000	1250	1500	1700	
86 BHEL 77-2	10	7,5		37,0	35,7	30,6		26,3	21,1	16,4
86 BHEL 77-3	15	11		55,5	53,5	46,0		39,5	31,6	24,6
86 BHEL 77-4	20	15		74,0	71,5	61,0		52,5	42,0	32,8
86 BHEL 77-5	25	18,5		92,5	89,5	76,5		66,0	52,5	41,0
86 BHEL 77-6	30	22		111,0	107,0	92,0		79,0	63,0	49,0

Model 400V Three phase	P ₂		Q=Flow rate							
	[HP]	[kW]	l/min m ³ /h	700	1000	1250	1500	1700	1900	2100
86 BHEL 95-2	12,5	9,2		38,8	34,0	30,2	26,4	22,8	18,4	13,6
86 BHEL 95-3	20	15		58,0	51,0	45,5	39,6	34,2	27,6	20,4
86 BHEL 95-4	25	18,5		77,5	68,0	60,5	53,0	45,5	36,8	27,2
86 BHEL 95-5	30	22		97,0	85,0	75,5	66,0	57,0	46,0	34,0
86 BHEL 95-6	40	30		116,0	102,0	90,5	79,0	68,5	55,0	41,0

IDROGO (JOCKEY) PERFORMANCE TABLE

Model	P ₂		Q=Flow rate					
	[HP]	[kW]	l/min m ³ /h	20	30	40	60	80
IDROGO 40/08	0,8	0,6		43,3	40,2	36,3	26,1	13,4
IDROGO 40/10	1	0,75		54,1	50,2	45,4	32,6	16,8
IDROGO 40/12	1,2	0,9		64,9	60,2	54,5	39,2	20,2
IDROGO 40/15	1,5	1,1		75,7	70,3	63,6	45,7	23,5

WINNER 4N (JOCKEY) PERFORMANCE TABLE

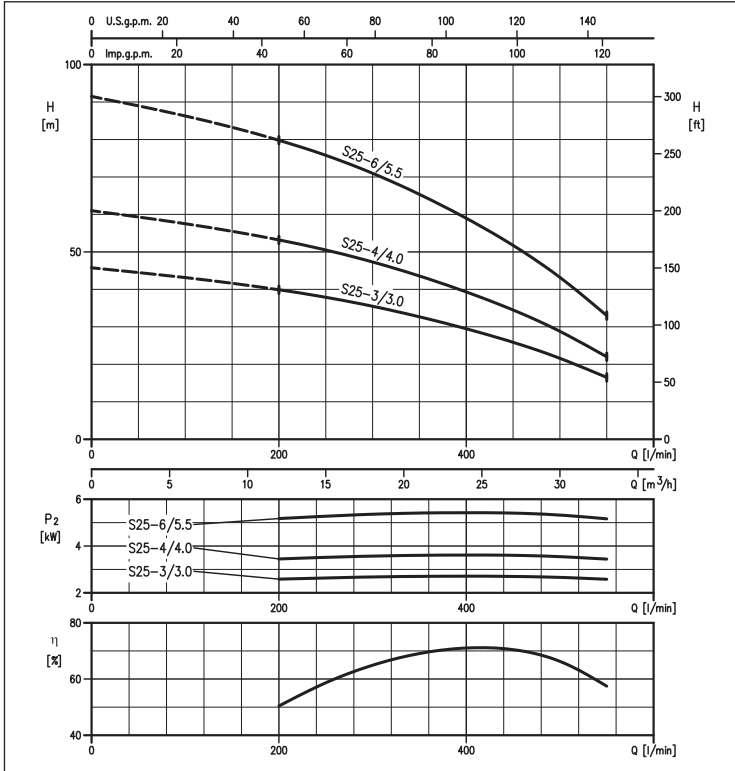
Model	P ₂		Q=Flow rate								
	[HP]	[kW]	l/min m ³ /h	10	15	20	30	35	45	55	95
WINNER 4N1- 18	0,7	0,55		95,0	89,0	80,0	54,0	38,0	-	-	-
WINNER 4N1- 24	1	0,75		127,0	119,0	107,0	72,0	50,0	-	-	-
WINNER 4N2- 20	1,5	1,1		-	131,0	127,0	113,0	103,0	75,0	38,0	-
WINNER 4N4- 18	2	1,5		-	-	-	114,0	111,0	104,0	96,0	32,0



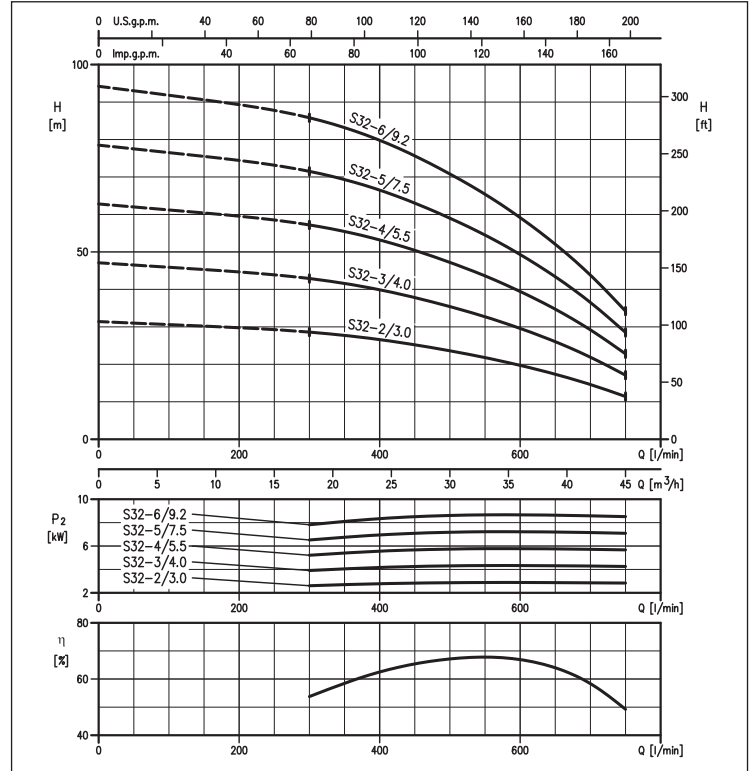
FFS-FFB

FFS-S FIRE-FIGHTING UNIT KIT

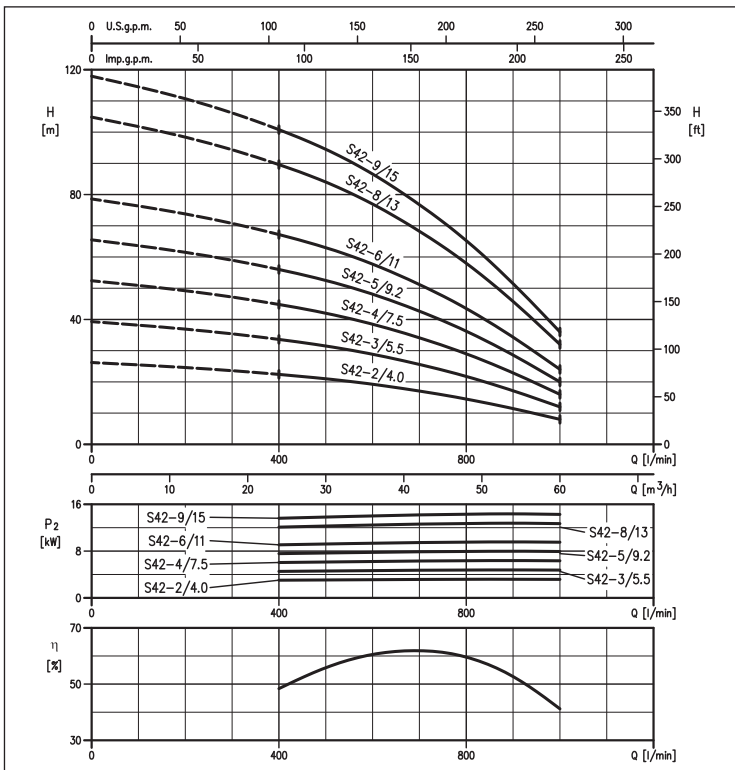
SF6 S25 range PERFORMANCE CURVES (impeller diameter 111,5 mm)
(according to ISO 9906 Attachment A)



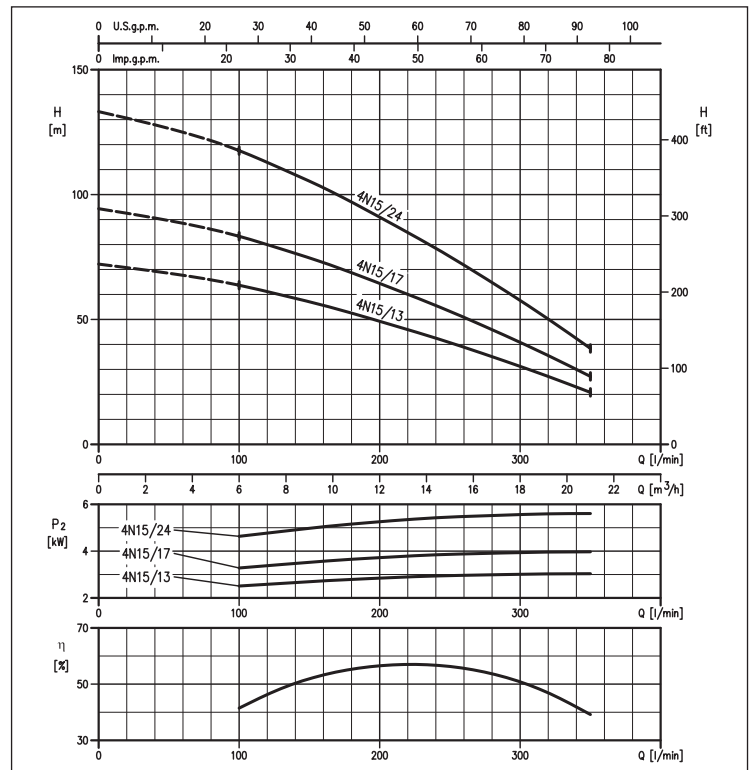
SF6 S32 range PERFORMANCE CURVES (impeller diameter 113,7 mm)
(according to ISO 9906 Attachment A)



SF6 S42 range PERFORMANCE CURVES (impeller diameter 114 mm)
(according to ISO 9906 Attachment A)



WINNER 4N range PERFORMANCE CURVES (impeller diameter 75,5 mm)
(according to ISO 9906 Attachment A)

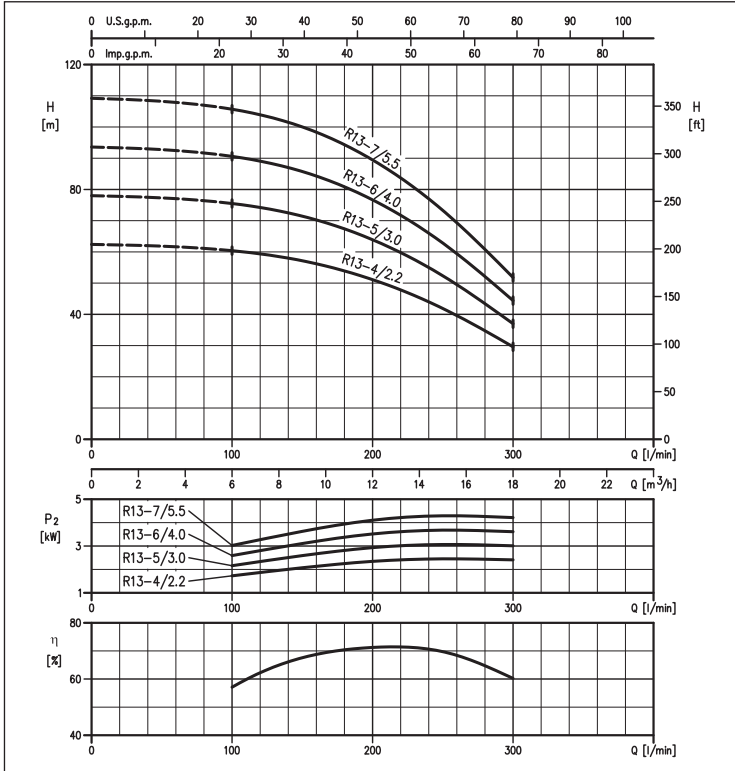




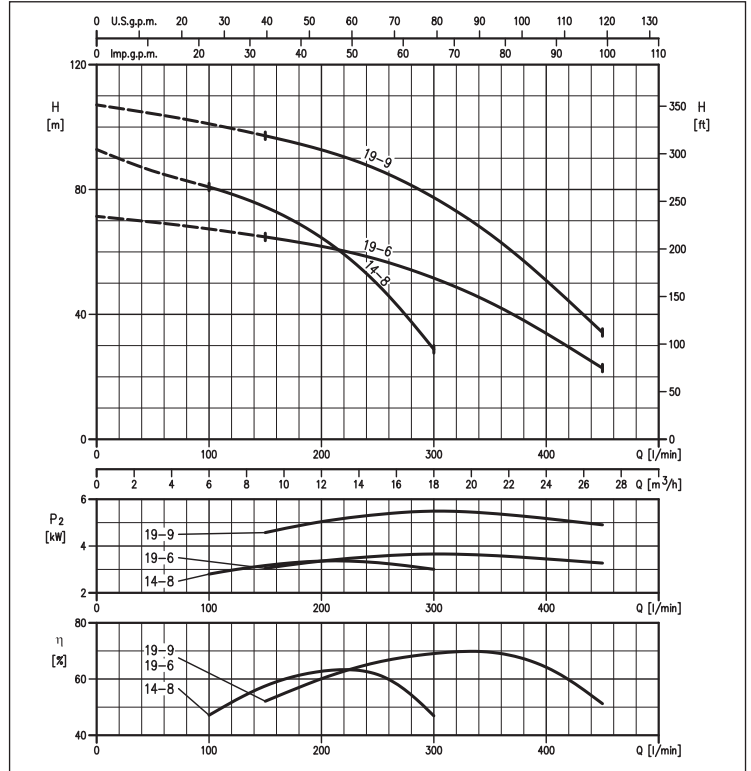
FFS-FFB

FFS-S FIRE-FIGHTING UNIT KIT

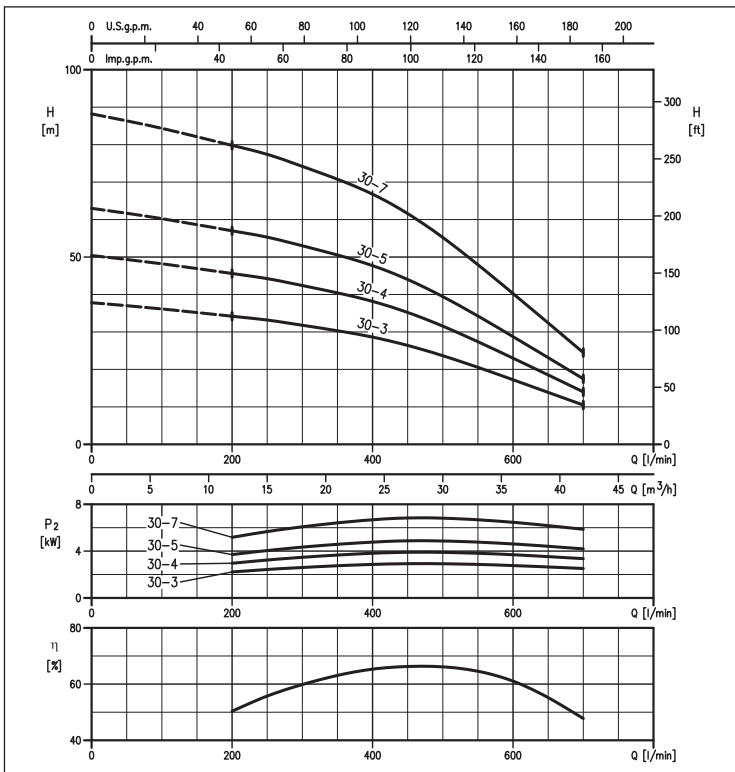
SF6 R13 range PERFORMANCE CURVES (impeller diameter 117 mm)
(according to ISO 9906 Attachment A)



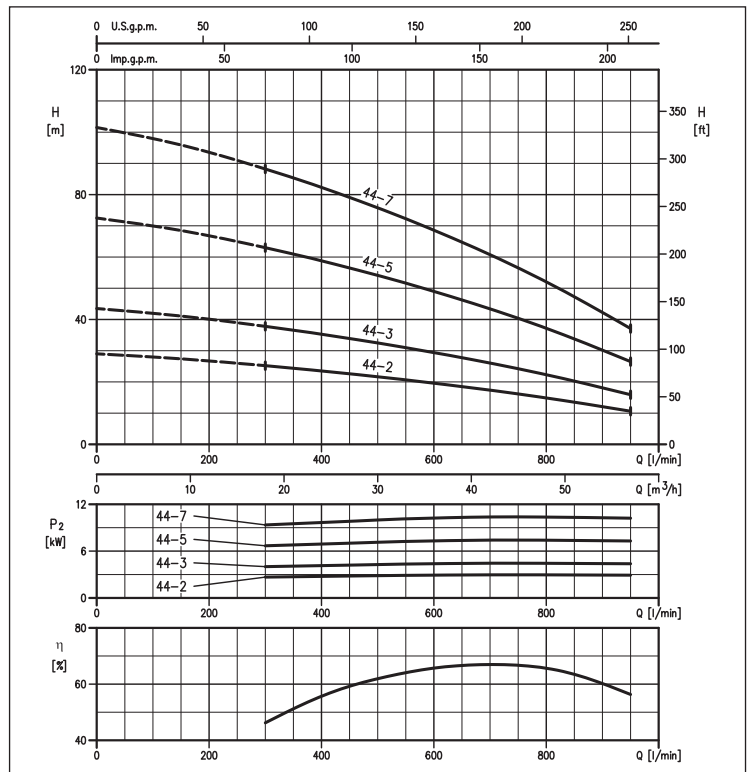
64BHE14-19 range PERFORMANCE CURVES (impeller diameter 104 mm)
(according to ISO 9906 Attachment A)



64BHE 30 range PERFORMANCE CURVES (impeller diameter 104 mm)
(according to ISO 9906 Attachment A)



64BHE 44 range PERFORMANCE CURVES (impeller diameter 110,5 mm)
(according to ISO 9906 Attachment A)



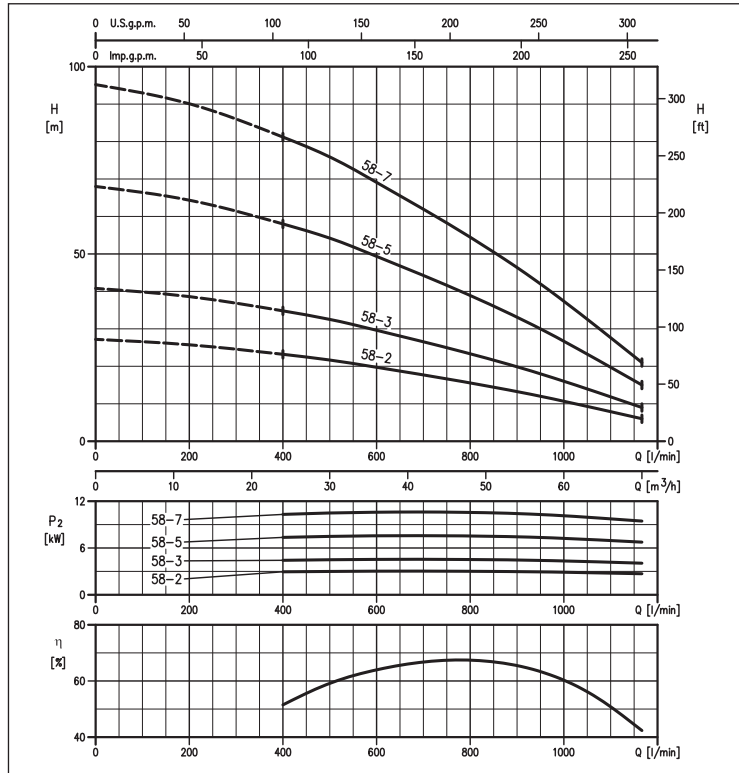
Data under revision. For more information please contact our sales network.



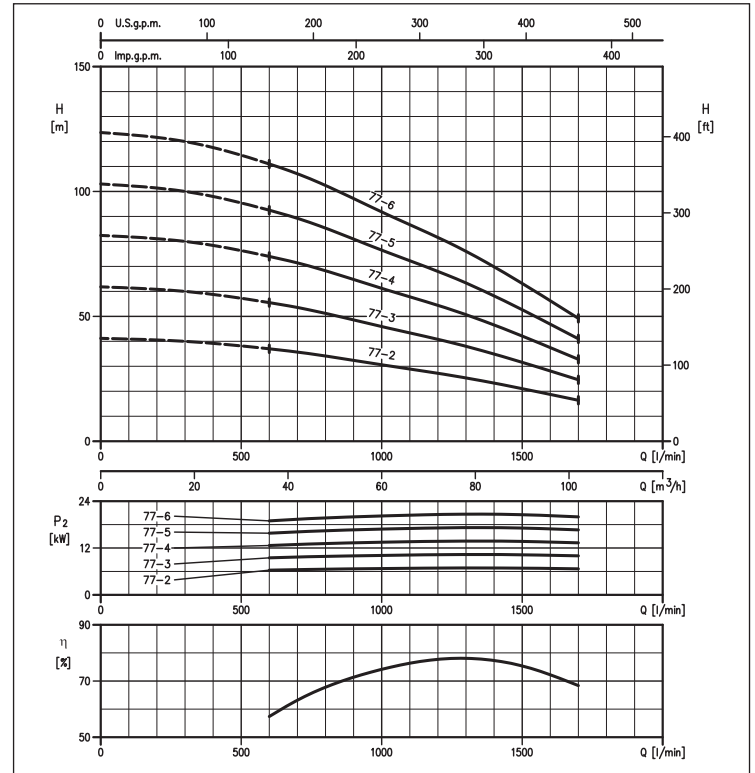
FFS-FFB

FFS-S FIRE-FIGHTING UNIT KIT

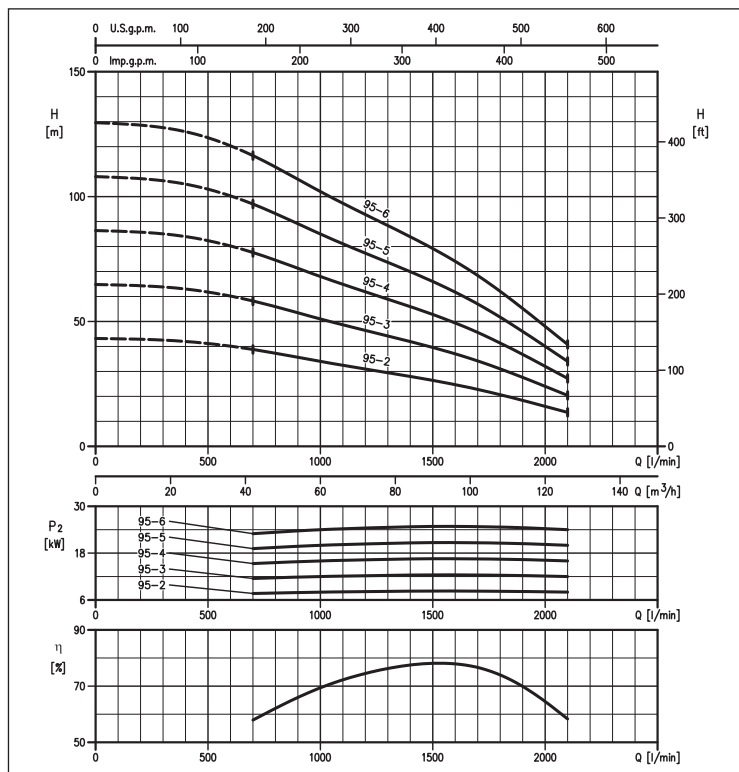
64BHE 58 range PERFORMANCE CURVES (impeller diameter 103 mm)
(according to ISO 9906 Attachment A)



86BHEL 77 range PERFORMANCE CURVES (impeller diameter 114 mm)
(according to ISO 9906 Attachment A)

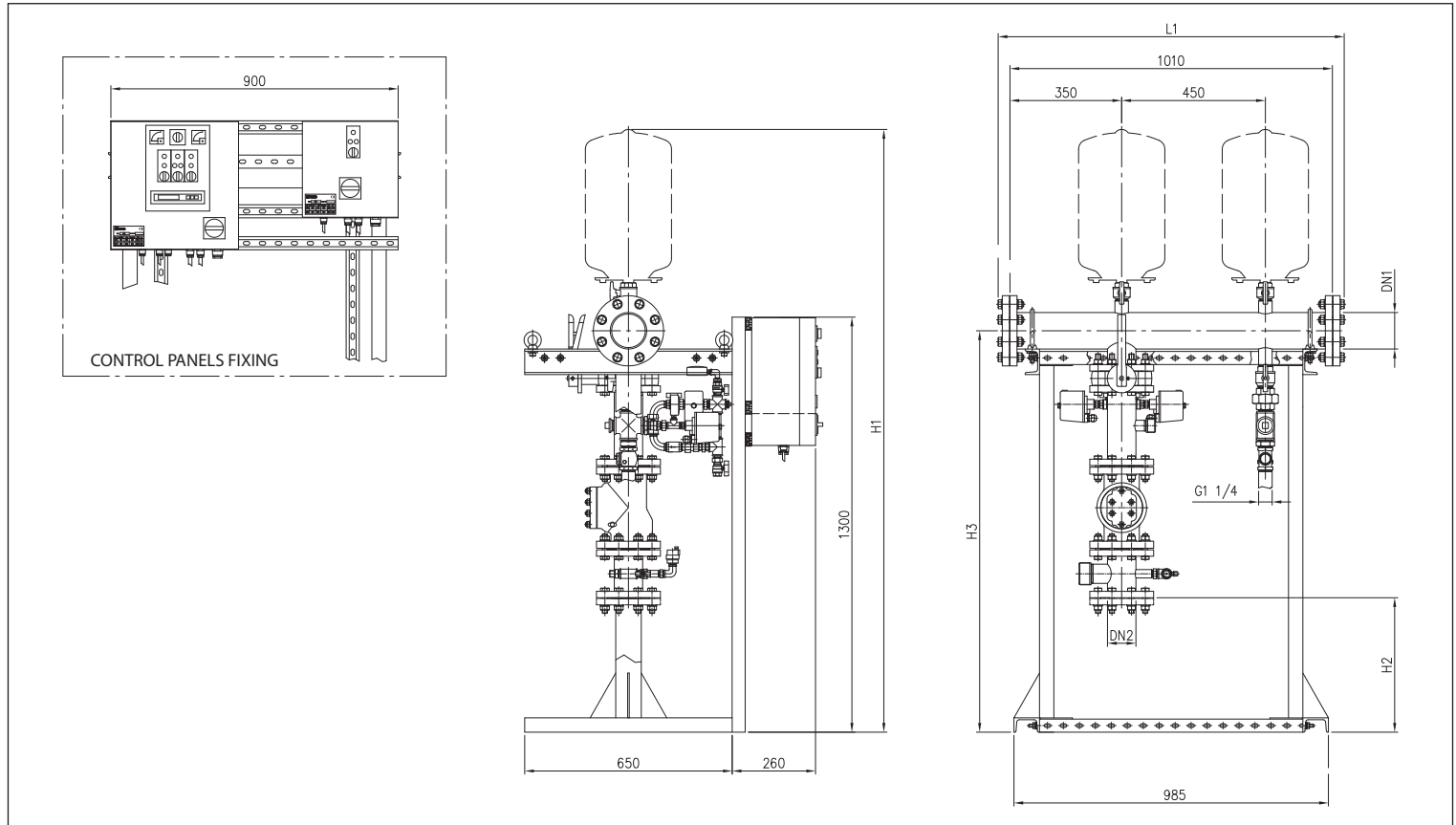


86BHEL 95 range PERFORMANCE CURVES (impeller diameter 117 mm)
(according to ISO 9906 Attachment A)



Data under revision. For more information please contact our sales network.

FFS115 DIMENSIONS - MULTISTAGE SUBMERSED ELECTRIC PUMPS (SF6 - WINNER 4N15) + JOCKEY



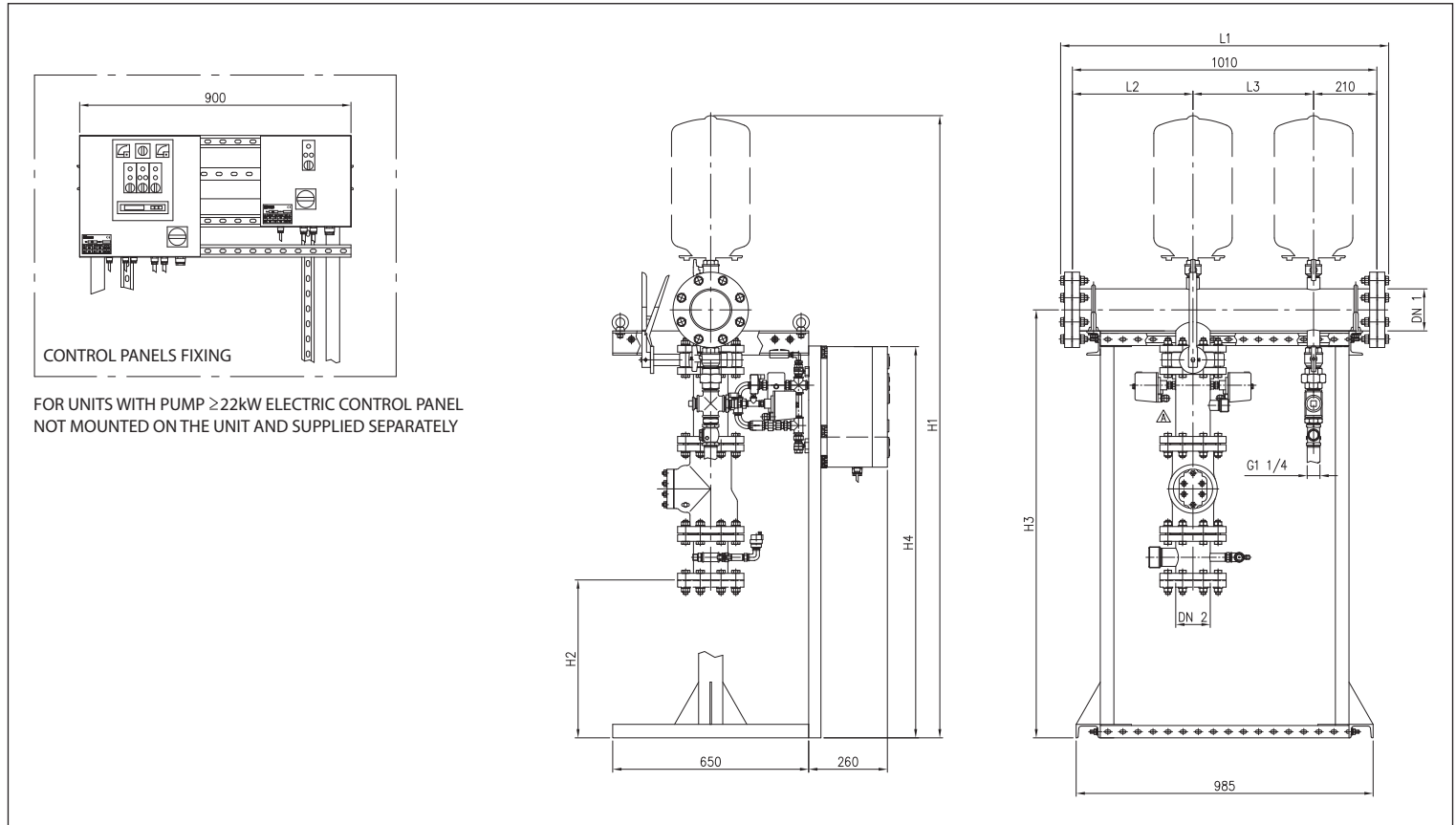
DIMENSIONS TABLE

Model	Jockey pump	Dimensions [mm]					
		DN1	DN2	L1	H1	H2	H3
SF6 S25-3/3.0	IDROGO 40/10	65	65	1065	1850	440	1240
SF6 S25-4/4.0	IDROGO 40/12	65	65	1065	1850	440	1240
SF6 S25-6/5.5	WINNER 4N2-20	65	65	1065	1850	440	1240
SF6 S32-2/3.0	IDROGO 40/08	80	80	1075	1860	420	1245
SF6 S32-3/4.0	IDROGO 40/10	80	80	1075	1860	420	1245
SF6 S32-4/5.5	IDROGO 40/12	80	80	1075	1860	420	1245
SF6 S32-5/7.5	IDROGO 40/15	80	80	1075	1860	420	1245
SF6 S32-6/9.2	WINNER 4N4-18	80	80	1075	1860	420	1245
SF6 S42-2/4.0	IDROGO 40/08	100	80	1085	1890	420	1255
SF6 S42-3/5.5	IDROGO 40/08	100	80	1085	1890	420	1255
SF6 S42-4/7.5	IDROGO 40/10	100	80	1085	1890	420	1255
SF6 S42-5/9.2	IDROGO 40/12	100	80	1085	1890	420	1255
SF6 S42-6/11	IDROGO 40/15	100	80	1085	1890	420	1255
SF6 S42-8/15	WINNER 4N4-18	100	80	1085	1890	420	1255
SF6 S42-9/15	WINNER 4N4-18	100	80	1085	1890	420	1255
WINNER 4N15-13	IDROGO 40/12	65	50	1065	1850	525	1240
WINNER 4N15-17	WINNER 4N2-20	65	50	1065	1850	525	1240
WINNER 4N15-24	WINNER 4N2-20	65	50	1065	1850	525	1240
SF6 R13-4/2.2	IDROGO 40/12	65	65	1065	1850	440	1240
SF6 R13-5/3.0	IDROGO 40/15	65	65	1065	1850	440	1240
SF6 R13-6/4.0	WINNER 4N4-18	65	65	1065	1850	440	1240
SF6 R13-7/5.5	WINNER 4N4-18	65	65	1065	1850	440	1240

Data under revision. For more information please contact our sales network.

FFS-S FIRE-FIGHTING UNIT KIT

FFS115 DIMENSIONS - MULTISTAGE SUBMERSED ELECTRIC PUMPS (BHE) + JOCKEY



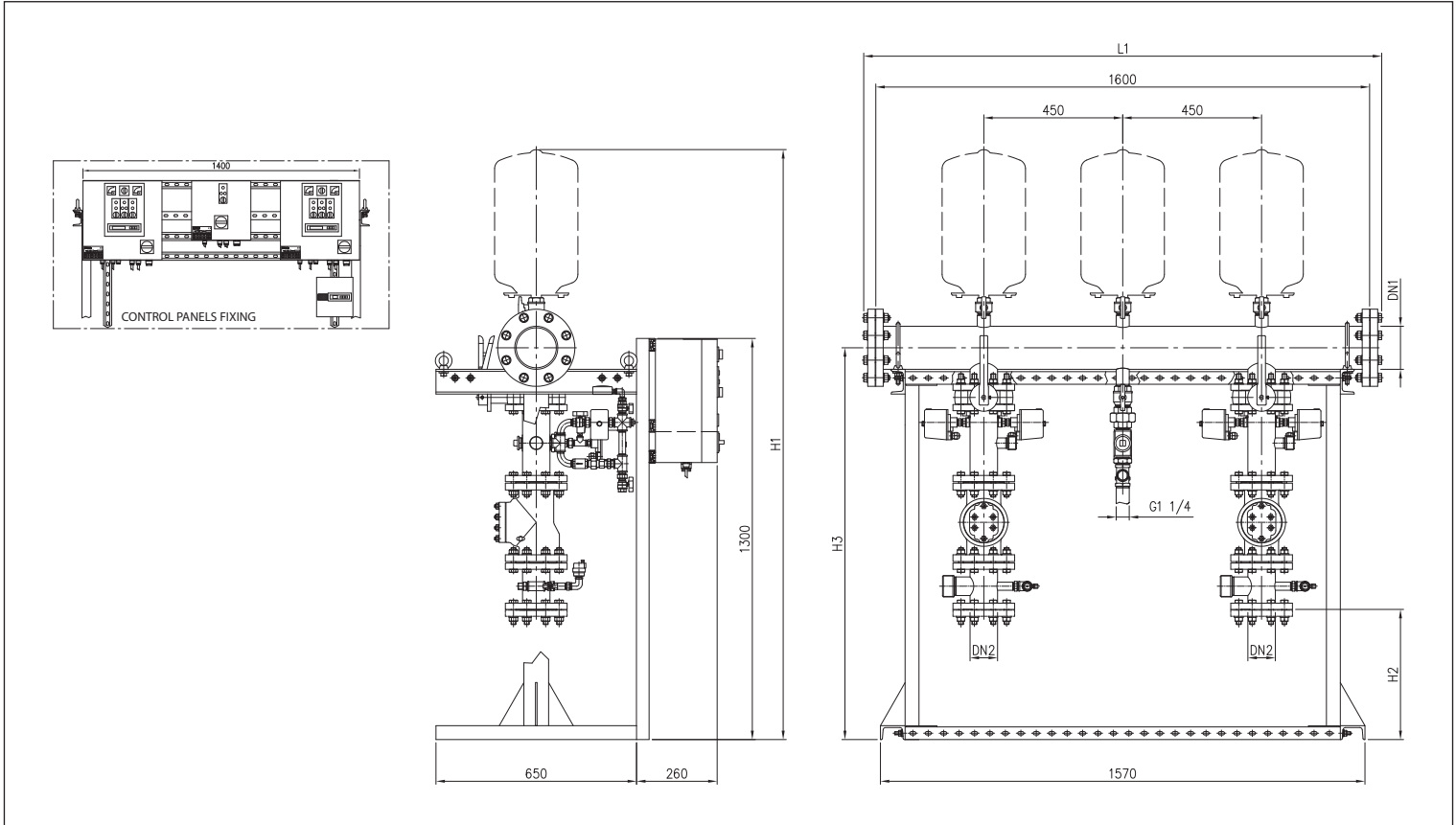
DIMENSIONS TABLE

Model	Jockey pump	Dimensions [mm]									
		DN1	DN2	L1	L2	L3	H1	H2	H3	H4	
64BHE 14-8	WINNER 4N1-18	65	65	1065	350	450	1850	440	1240	1300	
64BHE 19-6	IDROGO 40/12	65	65	1065	350	450	1850	440	1240	1300	
64BHE 19-9	WINNER 4N1-18	65	65	1065	350	450	1850	440	1240	1300	
64BHE 30-3	IDROGO 40/08	80	65	1075	350	450	1865	440	1245	1300	
64BHE 30-4	IDROGO 40/10	80	65	1075	350	450	1865	440	1245	1300	
64BHE 30-5	IDROGO 40/12	80	65	1075	350	450	1865	440	1245	1300	
64BHE 30-7	WINNER 4N1-18	80	65	1075	350	450	1865	440	1245	1300	
64BHE 44-2	IDROGO 40/08	100	80	1085	350	450	1890	420	1255	1300	
64BHE 44-3	IDROGO 40/08	100	80	1085	350	450	1890	420	1255	1300	
64BHE 44-5	IDROGO 40/12	100	80	1085	350	450	1890	420	1255	1300	
64BHE 44-7	WINNER 4N1-18	100	80	1085	350	450	1890	420	1255	1300	
64BHE 58-2	IDROGO 40/08	125	80	1090	350	450	1910	420	1270	1300	
64BHE 58-3	IDROGO 40/08	125	80	1090	350	450	1910	420	1270	1300	
68BHE 58-5	IDROGO 40/12	125	80	1090	350	450	1910	420	1270	1300	
68BHE 58-7	WINNER 4N1-18	125	80	1090	350	450	1910	420	1270	1300	
86BHEL 77-2	IDROGO 40/08	125	100	1090	400	400	2065	525	1420	1450	
86BHEL 77-3	IDROGO 40/12	125	100	1090	400	400	2065	525	1420	1450	
86BHEL 77-4	IDROGO 40/15	125	100	1090	400	400	2065	525	1420	1450	
86BHEL 77-5	WINNER 4N1-18	125	100	1090	400	400	2065	525	1420	1450	
86BHEL 77-6	WINNER 4N4-18	125	100	1090	400	400	2065	525	1420	1450	
86BHEL 95-2	IDROGO 40/08	125	100	1090	400	400	2065	525	1420	1450	
86BHEL 95-3	IDROGO 40/12	125	100	1090	400	400	2065	525	1420	1450	
86BHEL 95-4	WINNER 4N1-18	125	100	1090	400	400	2065	525	1420	1450	
86BHEL 95-5	WINNER 4N4-18	125	100	1090	400	400	2065	525	1420	1450	
86BHEL 95-6	WINNER 4N1-24	125	100	1090	400	400	2065	525	1420	1450	

Data under revision. For more information please contact our sales network.

FFS-S FIRE-FIGHTING UNIT KIT

FFS21S DIMENSIONS - MULTISTAGE SUBMERSED ELECTRIC PUMPS (SF6 - WINNER 4N15) + JOCKEY



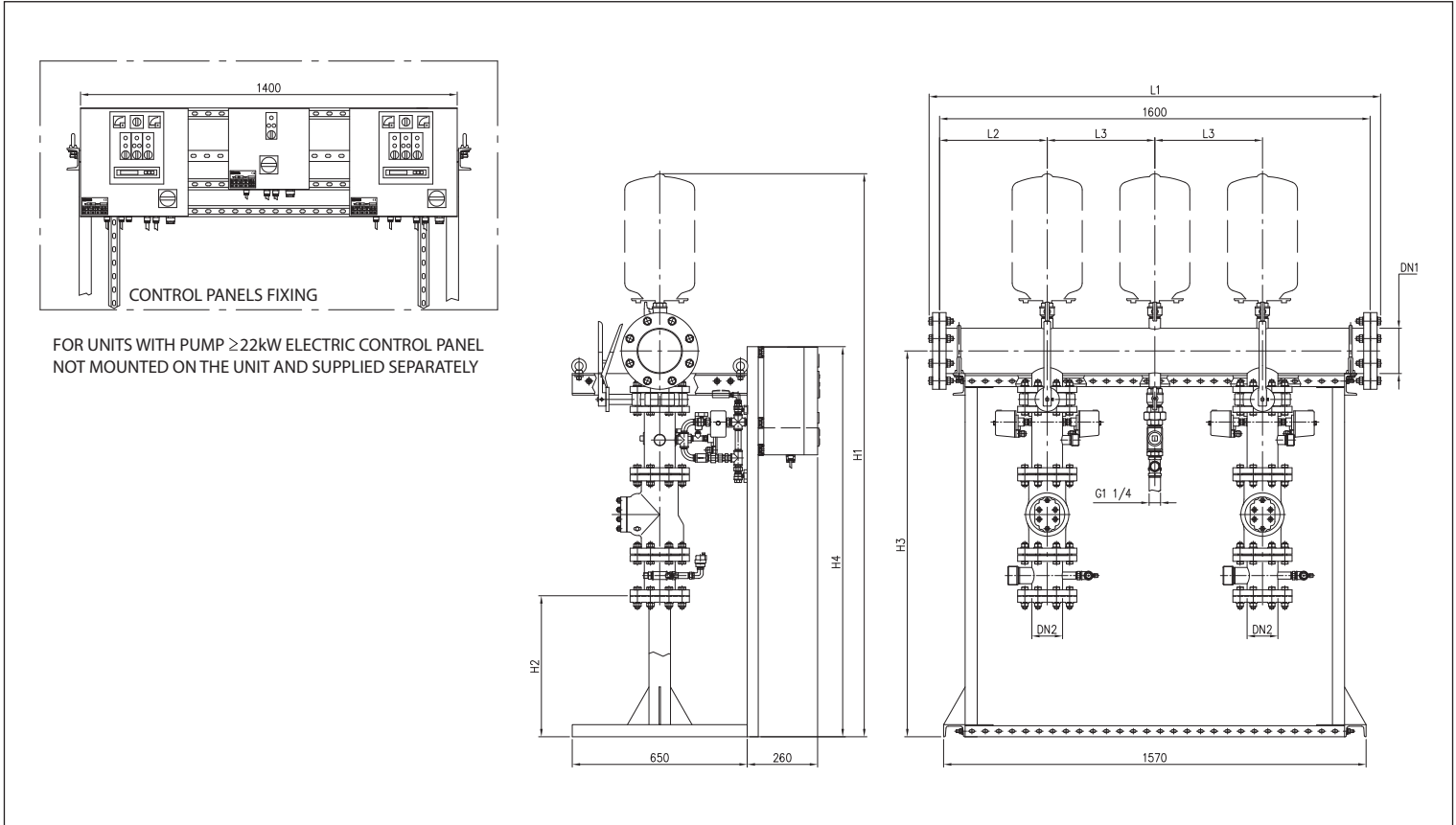
DIMENSIONS TABLE

Model	Jockey pump	Dimensions [mm]					
		DN1	DN2	L1	H1	H2	H3
SF6 S25-3/3.0	IDROGO 40/10	100	65	1675	1890	335	1255
SF6 S25-4/4.0	IDROGO 40/12	100	65	1675	1890	335	1255
SF6 S25-6/5.5	WINNER 4N2-20	100	65	1675	1890	335	1255
SF6 S32-2/3.0	IDROGO 40/08	100	80	1675	1890	420	1255
SF6 S32-3/4.0	IDROGO 40/10	100	80	1675	1890	420	1255
SF6 S32-4/5.5	IDROGO 40/12	100	80	1675	1890	420	1255
SF6 S32-5/7.5	IDROGO 40/15	100	80	1675	1890	420	1255
SF6 S32-6/9.2	WINNER 4N4-18	100	80	1675	1890	420	1255
SF6 S42-2/4.0	IDROGO 40/08	125	80	1680	1910	420	1270
SF6 S42-3/5.5	IDROGO 40/08	125	80	1680	1910	420	1270
SF6 S42-4/7.5	IDROGO 40/10	125	80	1680	1910	420	1270
SF6 S42-5/9.2	IDROGO 40/12	125	80	1680	1910	420	1270
SF6 S42-6/11	IDROGO 40/15	125	80	1680	1910	420	1270
SF6 S42-8/15	WINNER 4N4-18	125	80	1680	1910	420	1270
SF6 S42-9/15	WINNER 4N4-18	125	80	1680	1910	420	1270
WINNER 4N15-13	IDROGO 40/12	80	50	1670	1865	525	1245
WINNER 4N15-17	WINNER 4N2-20	80	50	1670	1865	525	1245
WINNER 4N15-24	WINNER 4N2-20	80	50	1670	1865	525	1245
SF6 R13-4/2.2	IDROGO 40/12	80	65	1670	1865	440	1245
SF6 R13-5/3.0	IDROGO 40/15	80	65	1670	1865	440	1245
SF6 R13-6/4.0	WINNER 4N4-18	80	65	1670	1865	440	1245
SF6 R13-7/5.5	WINNER 4N4-18	80	65	1670	1865	440	1245

Data under revision. For more information please contact our sales network.

KIT FIRE-FIGHTING UNIT FFS-S

FFS21S DIMENSIONS - MULTISTAGE SUBMERSED ELECTRIC PUMPS (BHE) + JOCKEY



DIMENSIONS TABLE

Model	Jockey pump	Dimensions [mm]								
		DN1	DN2	L1	L2	L3	H1	H2	H3	H4
64BHE 14-8	WINNER 4N1-18	80	65	1670	350	450	1865	440	1245	1300
64BHE 19-6	IDROGO 40/12	80	65	1670	350	450	1865	440	1245	1300
64BHE 19-9	WINNER 4N1-18	80	65	1670	350	450	1865	440	1245	1300
64BHE 30-3	IDROGO 40/08	100	65	1675	350	450	1890	335	1255	1300
64BHE 30-4	IDROGO 40/10	100	65	1675	350	450	1890	335	1255	1300
64BHE 30-5	IDROGO 40/12	100	65	1675	350	450	1890	335	1255	1300
64BHE 30-7	WINNER 4N1-18	100	65	1675	350	450	1890	335	1255	1300
64BHE 44-2	IDROGO 40/08	125	80	1680	350	450	1910	420	1270	1300
64BHE 44-3	IDROGO 40/08	125	80	1680	350	450	1910	420	1270	1300
64BHE 44-5	IDROGO 40/12	125	80	1680	350	450	1910	420	1270	1300
64BHE 44-7	WINNER 4N1-18	125	80	1680	350	450	1910	420	1270	1300
64BHE 58-2	IDROGO 40/08	125	80	1680	350	450	1910	420	1270	1300
64BHE 58-3	IDROGO 40/08	125	80	1680	350	450	1910	420	1270	1300
68BHE 58-5	IDROGO 40/12	125	80	1680	350	450	1910	420	1270	1300
68BHE 58-7	WINNER 4N1-18	125	80	1680	350	450	1910	420	1270	1300
86BHEL 77-2	IDROGO 40/08	150	100	1680	400	400	2095	525	1435	1450
86BHEL 77-3	IDROGO 40/12	150	100	1680	400	400	2095	525	1435	1450
86BHEL 77-4	IDROGO 40/15	150	100	1680	400	400	2095	525	1435	1450
86BHEL 77-5	WINNER 4N1-18	150	100	1680	400	400	2095	525	1435	1450
86BHEL 77-6	WINNER 4N4-18	150	100	1680	400	400	2095	525	1435	1450
86BHEL 95-2	IDROGO 40/08	150	100	1680	400	400	2095	525	1435	1450
86BHEL 95-3	IDROGO 40/12	150	100	1680	400	400	2095	525	1435	1450
86BHEL 95-4	WINNER 4N1-18	150	100	1680	400	400	2095	525	1435	1450
86BHEL 95-5	WINNER 4N4-18	150	100	1680	400	400	2095	525	1435	1450
86BHEL 95-6	WINNER 4N1-24	150	100	1680	400	400	2095	525	1435	1450